

# WANTED!

## CARE WORKERS

up to **£200 Reward**



We are re-launching our "Recommend A Friend" scheme. That means that you could get from **£100** to **£200** for every Care Worker you recommend to Home Choice Care who is successfully employed and then works for us for 3 months. There are no limits to how many people you can recommend. It could be one, or it could be one a week. They just need to be the right kind of people to work in homecare. Please contact Jane Furnival on **07823 447187** for further information.

Home Choice Care is an Equal Opportunities Employer

**So don't delay – Earn that extra money right away!**

### Training Update

**Food Hygiene** is being launched in-house with a training package from Regis, all staff are required to undertake this is rolling from MARCH onwards.

**Moving and Handling** updates are underway all staff have received a letter requesting their update.

**Health and Safety** is underway and starting from March 4th again all staff should of received letters.

**POVA** is underway and all staff are having mandatory updates rolling from March.

We are still sourcing **Ear, Nose and Throat** Training from our Local CPDC. Further updates to follow.

Jill Field Care Supervisor will be carrying on with **Medication** raining.

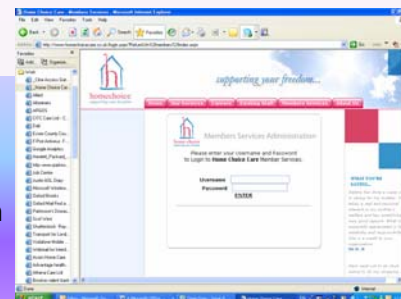
*Claire Bedford  
Deputy Care Director*

### Home Choice Care ON LINE

Our website [www.homechoicecare.co.uk](http://www.homechoicecare.co.uk) is currently under development with some fantastic additional features for you all to enjoy. You'll soon be able to train on line, gain certification and even view your very own training log. We will have information and training on various diseases, illnesses and conditions..

In the very near future we'll have our very own chat rooms and even shopping on line.

If you have any other ideas of services, or use for our website please call me on 07920 752041 – I would like to hear from anyone who wants to be part of the development discussions on the our website. **Don't delay, call me today.**



*Patsy Daeche  
Marketing / Communications Manager*



home choice  
supporting your freedom

# Open Door

**Welcome** to your eighth issue of Open Door, the newsletter especially for Home Choice Care Workers. Thanks to everyone who gave feedback on the last issue, we need you, so keep your ideas coming in.

Home Choice Care now provide over **20,000** visits per week to clients and patients. We deliver over **30,000** hours of care per month. **Thank You** for helping us achieve this. By working together and covering all those extra shifts and sickness/absences you have helped maintain our hours. Well Done!

### Jonathan Ludd, Senior Care Director Eastern Region



Welcome our first newsletter of 2008! It's going to be a great year for Cambridge Branch – Lots of focus on organic growth, and expansion into North Cambridgeshire goes live in early March where we have already secured a further 250 hours of social care delivery.

Where do I fit in? Yes – I am still around, only a phone call away if not in the branch... For me I received some very pleasing news recently. I have been promoted to Senior Care Director; which means that I now oversee all branches in the newly formed **Eastern Region**; namely Huntingdon Branch, Cambridge Branch, and the soon to be Chelmsford Branch (Essex branch moves in early May to new premises).

The Eastern Region has further seen the successful implementation of our Polish workers. By May this year all Eastern region branches will benefit from the influx of Polish staff – to assist in the continuing growth of HCC, so a very warm welcome to our Team.

Guys, a real exciting time with so much growth ahead of us this year – Keep up the great work – Remember you guys are the Company.

*Thanks, Jonathan*



### Home Choice Care HITS on Radio

This year we decided to try radio advertising, starting with Q103 FM in Cambridge and Huntingdon. Our first radio advertising campaign began on 7<sup>th</sup> January with 2 ads running every day for 2 weeks. One ad was directed at existing care workers wanting a change and the other at local people wanting to become a care worker. The ad was so successful we decided to move it to Essex FM, from early February, for a 3 weeks advertising campaign. We had a staggering 134 enquiries in total from both ads.

If you haven't heard the ads then log on to our website at [www.homechoicecare.co.uk](http://www.homechoicecare.co.uk). Take a couple of minutes to listen to them – show them to your friends, remember if you recommend a friend you could earn up to £200 per person! See back cover for more details.

Home Choice Care helps people live independently in their own homes by providing care workers to help with their daily needs

# Local Branch Update



Brian is still with us – so do not worry, instead Brian has been up skilled to Care Team Leader where he will now oversee the operations of Care Delivery for both South Cambridgeshire and City Districts, alongside the new North Cambridgeshire. I am certain that Brian will strive to ensure that our quality of service continues at the high standards that we are accustomed to, and I wish him every success.

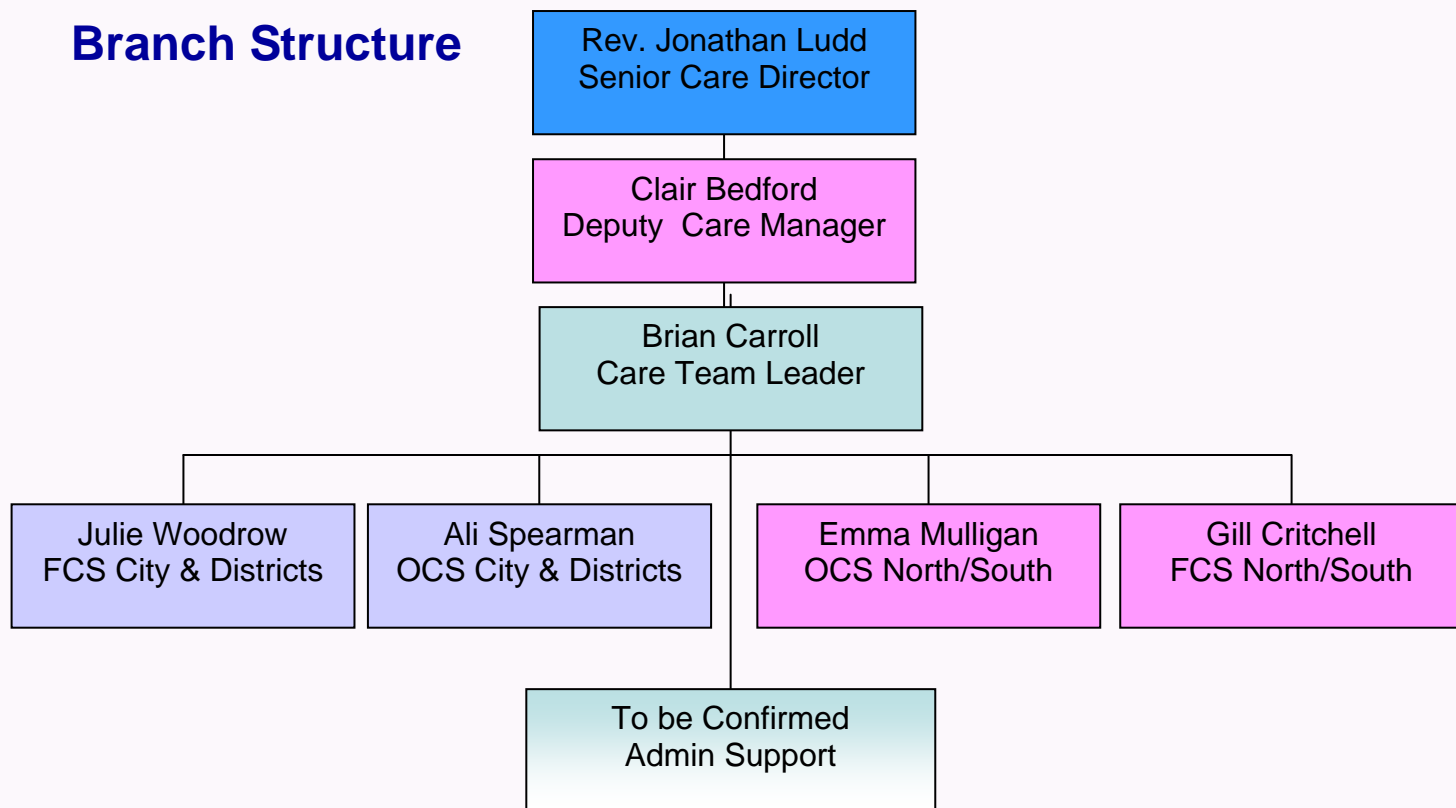


We have further seen the arrival of new branch staff, Mrs Emma Mulligan, so a very warm welcome to her. Emma joined the Cambridge Branch earlier this month, as a inter-branch transfer from Huntingdon. I am certain that you all will ensure that she 'settles in' nicely with our usual warm welcome. Emma has been promoted to Office Care Supervisor of South Cambridgeshire and has replaced Brian Carroll.



Claire – What can I say about Claire, part of the furniture really... Claire continues to be the Deputy Care Manager, but has further been up skilled. She will now focus on all Human issues; you know those 'little moments' when you guys need to speak with someone. Claire will further continue to drive our training and development courses forward, with the introduction of Mental Health Training and enhanced Health & Safety Training.

## Branch Structure



## See the Real Person

When you visit your service users do you ever see photos of them as young people? If you haven't then please try to look at them-person as they the person that



Understanding helps provide their needs and a better quality of life. I know many of you know your service users well but perhaps this is a short cut for those colleagues new to care work — or with brand new service users when you are first introduced?

Easter is fast approaching so we need to make sure that all the rotas are correct and meet the holiday needs of our service users. Please work closely with your local office to make sure that Easter bank holiday passes smoothly for everyone concerned.

**Best wishes**  
**Professor Justin Jewitt, Chairman**



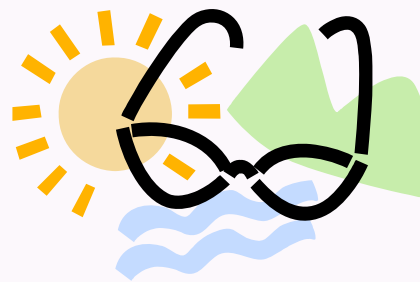
## Birthday Wishes and Belated Birthday wishes to the following members of staff:

- Judy Norman, 3rd Jan, Glenys Reeve 23rd Jan, Katarina Malikova 2nd Feb, Sharon Geraghty 16th Feb, Daria Dziadzio 19th Feb, Vladimira Kuncova 25th Feb, Petra Langerova 26th Feb, Ali Spearman 27th Feb, Vrea Vejrychova 5th March, Emma Mulligan 12th March, Brian Carroll 23rd March, Alison Audley 27th March, Jane Cash 31st March



## Timesheets

A big thank you to all of you who are getting your timesheets in on time! Remember (You know who you are) – Timesheets must be in by no later than **Monday at Midday** – If the Branch has not received your timesheet by this time, we cannot calculate your mileage / wage payments accurately – meaning that payments can be affected! We don't want that for any of you... so ensure you meet the payroll Deadline.



## Going on a Summer Holiday?

Remember – The branch needs a minimum of 4-weeks notice for all holiday requests... Please ensure that you complete the HCC Holiday Request Form – Submit the form to your Line Manager for Approval.

Remember: Your holiday is not guaranteed – You Holiday is only approved at the point where you receive a signed photocopy in the post.

## Congratulations

To Ali Spearman for securing her place on the Health & Social Care Degree Course – Ali has worked really hard to grab this place – so good luck in your studies.

